

# Mississippi CHAMPS Conference Panel

September 28, 2017

## What Can WIC Do for You?



# Panel Moderator: Cathy Carothers, BLA, IBCLC, FILCA

## Panelists:

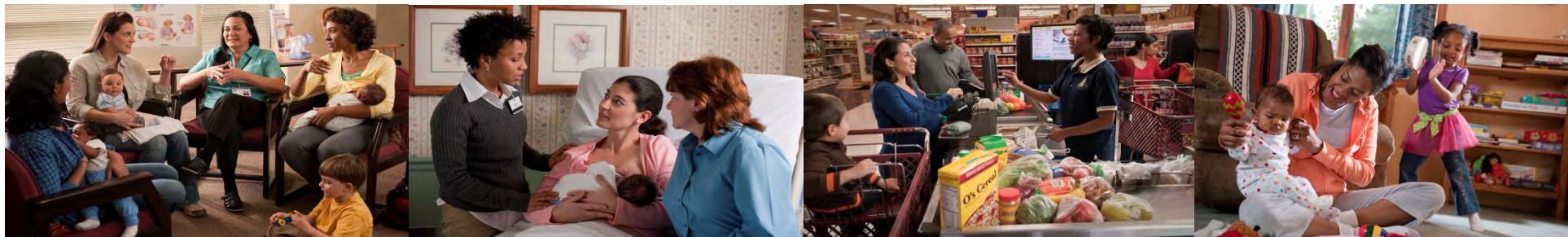
- **Aleshia Jones, MBA, CLC**  
MSDH Southern Region Breastfeeding Coordinator
- **Tawanda Logan-Hurt, BSW, CLC**  
MSDH Northern Region Breastfeeding Coordinator
- **Amanda DuBose, RD, LD**  
Nutrition Services Director, MS WIC Program
- **Maggie Allen, IBCLC,**  
WIC Peer Counselor, MS Central Region
- **Melissa Brown-Burkes**  
WIC Peer Counselor, MS Southern Region

# WIC-Hospital Collaboration



# MSDH WIC Service Overview

- Special Supplemental Food Program for Women, Infants and Children (WIC) is a federal program administered by each state
- In Mississippi, the WIC Program is administered by the Mississippi State Department of Health (MSDH)



# WIC Services Overview

## Services

- Tailored supplemental food package
- Nutrition education
- Breastfeeding promotion and support

## Target population

- Pregnant women
- Postpartum women up to 6 months
- Breastfeeding women up to 12 months
- Infants
- Children up to age 5

# Qualifications for WIC

## WIC Eligibility Guidelines

- Resident of MS
- Have nutrition- related health risk
- Meet income requirements



## Income Eligibility Guidelines (valid through June 30, 2018)

Household Size	If household income is no more than		
	Per year	Per month	Per week
1	\$22,311	\$1,860	\$430
2	\$30,044	\$2,504	\$578
3	\$37,777	\$3,149	\$727
4	\$45,510	\$3,793	\$876
5	\$53,243	\$4,437	\$1,024
6	\$60,976	\$5,082	\$1,173
7	\$68,709	\$5,726	\$1,322
8	\$76,442	\$6,371	\$1,471
Each additional family member, add	+ \$7,733	+ \$645	+ \$149





# Breastfeeding Promotion and Support Program

- WIC breastfeeding staff provide direct breastfeeding information and support to all pregnant and breastfeeding women receiving services from the MSDH WIC Program.
- This is accomplished by providing
  - breastfeeding peer support
  - breastfeeding management education and assistance
  - breastfeeding devices
- **Target Population:** Pregnant and postpartum women (up to 12 months) residing in Mississippi who meet income guidelines established by the WIC Program.
- **Area of the state:** State-wide





# Breastfeeding Promotion and Support Program

Hospitals should know....

- WIC Breastfeeding Program continues to provide direct breastfeeding services to **all** WIC participants
- A priority system is used when issuing breastfeeding devices so WIC participants most in need can be provided devices
- In the planning phases of creating a formal partnership between MSDH WIC and delivering hospitals
- WIC staff are currently available to serve as members of Baby Friendly-related task forces
- WIC staff are available to assist with the provision of group prenatal and breastfeeding education

# Recent Changes

- Effective July 1, 2017 the Health Departments throughout Mississippi have WIC clinics with WIC designated certifiers and clerk/aides
- The goal of this initiative is to make each WIC visit more efficient by reducing patient wait time
- Appointments can be made by calling the local health department or the WIC call center (1-800-338-6747)

# MSDH Reorganization

## MSDH Changes

- From 9 public health districts to 3 public health regions
- 5 District offices closed
- Changed days and hours of operation for health departments

## Effects on the WIC Program

- Regional staff located throughout the county
- WIC services offered on varying days in varying health departments

# Where can MSDH WIC be effective in Baby Friendly Hospital Initiative?

## *Ten Steps to Successful Breastfeeding*

- Step 3
  - Prenatal preparation
- Step 10
  - Post-discharge follow up

