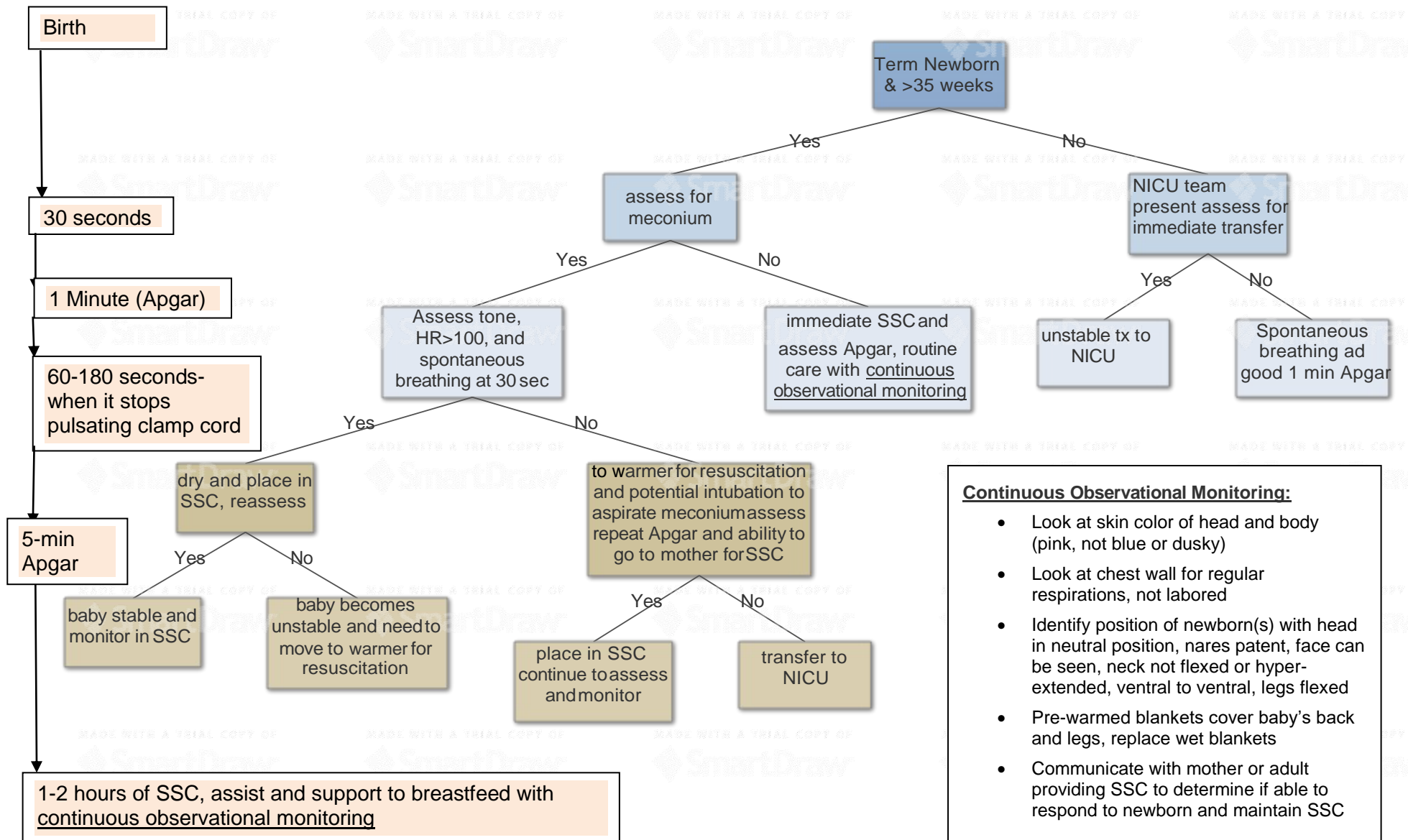


SSC for Vaginal Delivery in Healthy Term Newborn



Continuous Observational Monitoring:

- Look at skin color of head and body (pink, not blue or dusky)
- Look at chest wall for regular respirations, not labored
- Identify position of newborn(s) with head in neutral position, nares patent, face can be seen, neck not flexed or hyper-extended, ventral to ventral, legs flexed
- Pre-warmed blankets cover baby's back and legs, replace wet blankets
- Communicate with mother or adult providing SSC to determine if able to respond to newborn and maintain SSC